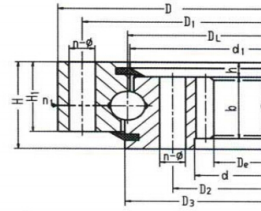
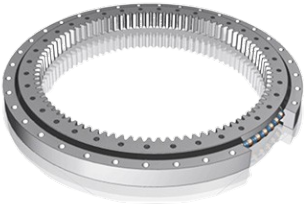


## 内齿回转支承



013,014

| 工厂型号        | 外径     |              | 内径     |              | 总高度   |              | 重量  |         |
|-------------|--------|--------------|--------|--------------|-------|--------------|-----|---------|
|             | 英寸尺寸   | 公制尺寸<br>(mm) | 英寸尺寸   | 公制尺寸<br>(mm) | 英寸尺寸  | 公制尺寸<br>(mm) | 磅   | 重量(kgs) |
| LRK-16N1Z   | 20.39  | 518          | 12.85  | 326.4        | 2.2   | 55.8         | 65  | 29      |
| LRK-22N1Z   | 25.51  | 648          | 17.6   | 447          | 2.2   | 55.8         | 90  | 41      |
| LRK-25N1Z   | 29.45  | 748.03       | 21.6   | 549          | 2.2   | 55.8         | 106 | 48      |
| LRK-29N1Z   | 33.39  | 848.1        | 25.6   | 650.2        | 2.2   | 55.8         | 121 | 54      |
| LRK-33N1Z   | 37.32  | 948          | 29.133 | 740          | 2.2   | 55.8         | 148 | 67      |
| LRK-37N1Z   | 41.26  | 1048         | 33.133 | 841.6        | 2.2   | 55.8         | 165 | 74      |
| LRK-43N1Z   | 47.17  | 1198         | 39.133 | 994          | 2.2   | 55.8         | 188 | 85      |
| LHS6-16N1Z  | 20.4   | 518          | 12.85  | 326.4        | 2.2   | 55.8         | 92  | 41      |
| LHS6-21N1Z  | 25.5   | 647.7        | 17.6   | 447          | 2.2   | 55.8         | 117 | 53      |
| LHS6-25N1Z  | 29.5   | 749.3        | 21.6   | 549          | 2.2   | 55.8         | 148 | 67      |
| LHS6-29N1Z  | 33.4   | 848          | 25.6   | 650.2        | 2.2   | 55.8         | 171 | 77      |
| LHS6-33N1Z  | 37.4   | 950          | 29.13  | 740          | 2.2   | 55.8         | 205 | 92      |
| LHS6-37N1Z  | 41.25  | 1047.7       | 33.133 | 841.6        | 2.2   | 55.8         | 226 | 102     |
| LHS6-43N2Z  | 47.18  | 1198         | 39.13  | 994          | 2.2   | 55.8         | 253 | 114     |
| LHT10-30N1Z | 36     | 914.4        | 24.16  | 613.7        | 3.5   | 88.9         | 411 | 185     |
| LHT10-36N1Z | 42     | 1067         | 30.16  | 766          | 3.5   | 88.9         | 517 | 233     |
| LHT10-42N1Z | 48     | 1219.2       | 36.16  | 918.5        | 3.5   | 88.9         | 580 | 261     |
| LHT10-48N1Z | 54     | 1371.6       | 42.16  | 1071         | 3.5   | 88.9         | 689 | 310     |
| LHT10-54N1Z | 60     | 1524         | 48.16  | 1223         | 3.5   | 88.9         | 775 | 349     |
| LHT10-60N1Z | 66     | 1676.4       | 54.16  | 1375.7       | 3.5   | 88.9         | 842 | 379     |
| 516292001   | 16.625 | 422.3        | 9.714  | 247          | 1.968 | 50           | 65  | 29      |
| 516293001   | 20.486 | 520.4        | 12.75  | 324          | 2.06  | 52.3         | 105 | 47      |
| 516294001   | 25.75  | 654          | 16.85  | 428          | 2.75  | 70           | 180 | 81      |

内齿回转支承

|           |        |        |        |        |       |       |      |     |
|-----------|--------|--------|--------|--------|-------|-------|------|-----|
| 516295001 | 28.937 | 735    | 19.6   | 498    | 2.834 | 72    | 225  | 101 |
| 516296001 | 34.252 | 870    | 24.921 | 633    | 2.834 | 72    | 270  | 122 |
| 516390001 | 40.88  | 1038.4 | 30.56  | 776    | 3.38  | 86    | 375  | 169 |
| 516374001 | 48.25  | 1225.6 | 36.4   | 924.6  | 4     | 101.6 | 660  | 297 |
| 516297001 | 54.375 | 1381   | 41.28  | 1048.5 | 5     | 127   | 1090 | 491 |
| 516298001 | 62.25  | 1581   | 47.76  | 1213   | 4.875 | 124   | 1370 | 617 |
| 516299001 | 72.5   | 1841.5 | 57     | 1448   | 6     | 152.4 | 1900 | 855 |